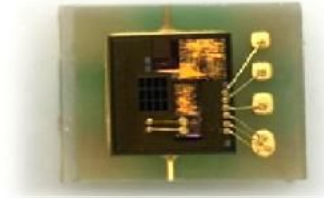


## Digital Ultraviolet Sensor GUVA-C32SM

**characteristic** -Integrated gallium nitride sensor for UVA detection, single package

- Support for UV index measurement (1...>14)
- Programmable gain and integration time
- I2C slave interface up to 400KHz
- Power mode management
- Turn-off current: Standard 0.8uA
- Power supply voltage: 2.6V-3.6V
- 2.0mm×2.3mm×1.4mm, 4 pin OLGA package

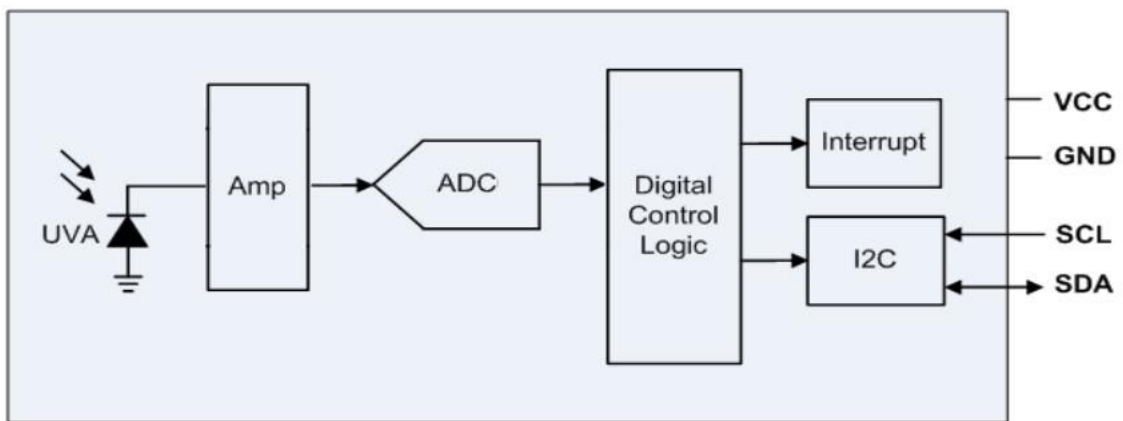


**apply** Smartphones, watches, weather stations  
Bike navigation, games, accessories

### general description

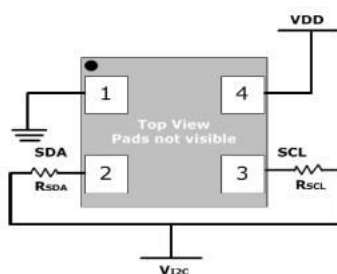
The GUVA-C32SM incorporates an integrated UV sensor, enabling easy configuration and application for user needs. The device features a photodiode, amplifier, ADC, digital control logic, and I2C interface circuit specifically designed to measure UV-A radiation.

GUVA-C32M can measure the intensity of long-wave ultraviolet rays respectively, and calculate the digital output according to each intensity. According to specific application requirements, the power mode management can be reasonably used to reduce power consumption.



functional block diagram

Application circuitry



### Pin description

Pin number	Pin name	explain
1	GND	landing
2	SDA	I2C data line
3	SCL	I2C pin wire
4	VCC	supply voltage

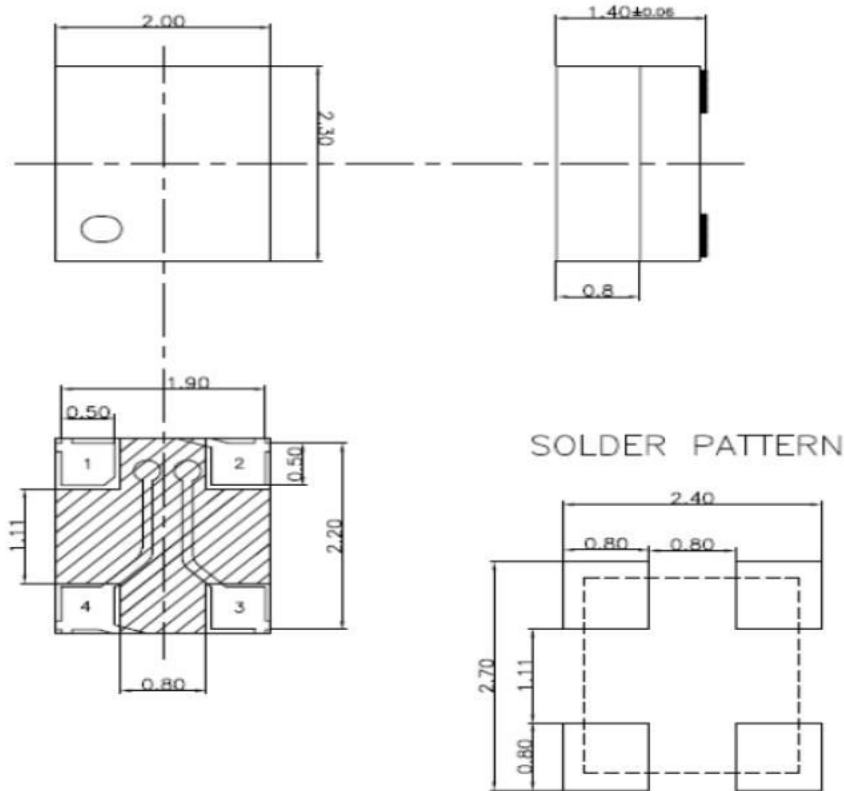
**general characteristic**

package	2.0 × 2.3 GuaOLGA
working temperature	-30~+85℃
welding temperature	260℃ (maximum temperature: 10 seconds)

**electrical character**

Output quantity	1 channel
output resolution	(UVA) 16-bit
Ultraviolet index range	0~14
sensor conversion time	0.39~800ms
Adjustable gain	×1~×128
Sleep pattern control	2~256
Power management	times 4 modes: Normal, sleep, auto-shutdown, Close
I2C clock frequency	Up to 400KHz
Working current	Standard 100
deep sleep current	<1
supply voltage	2.2~3.6V

**Packaging information**



**深圳市杰晟兴电子有限公司 JM Components Limited**

地址：深圳市福田区中航路7号鼎诚国际大厦南座2007室  
 手机：13662266995 马少良 电话：0755-83951311  
 官网：cn-sensor.com

邮编：518031  
 传真：0755-83952401  
 电邮：jackson@jmcomponents.com