

MAF sensor

AWM720P1 high flow sensor

The AWM700 series microbridge high-flow sensor delivers online flow measurement with a specially designed bypass configuration. This sensor measures up to 200 standard liters per minute (200SLPM) while maintaining a typical pressure drop of 1 inch water column. The AWM720P1 achieves an extensive flow range within a compact package, featuring a 6ms response time, 10V DC power supply (60mW power consumption), and a rugged plastic enclosure rated for overpressure up to 25PSI without compromising performance metrics. The sensor's AMP-compatible connectors ensure reliable electrical connections, making it particularly suitable for portable devices and battery-powered systems.

The AWM700 series sensors, developed primarily for the medical call machine market, can meet the needs of many medical and analytical instrument applications.



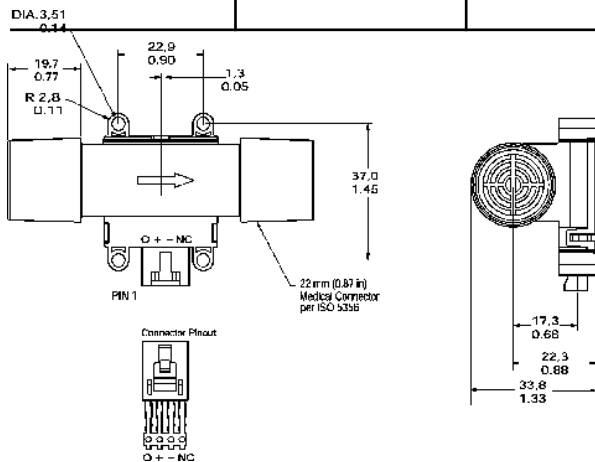
Flow range (full scale)	+200SLPM			
	least value	representative value	crest value	unit
Excitation voltage (the output voltage is proportional to this voltage)	9.990	10.000	10.010	VDC
service voltage	8.000	10.000	15.000	VDC
power consumption			60	mw
output loading	Chill circuit	10		mA
	source circuit	20		mA
calibration gas	air			
linear error	+/-0.3			% indication
reaction time	6			ms
service temperature	-25°~85°C			
Storage temperature	-40°~90°C			
Repeatability and tape	+/-0.5			% indication

Typical Applications:

- Oxygen concentrator
- Oxygen preserver
- Breathing machine and ventilation machine
- sprayer
- anesthetic machine
- Gas leak detector
- High traffic controller
- Telecommunication system
- Fuel cell control
- Environmental and climate control

Flow Parameters

rate of flow (SLPM)	representative value (VDC)	common difference (VDC)	pressure drop (inch water column)
0	1.00	0.05	0
25	2.99	--	0.04
50	3.82	0.18	0.13
75	4.30	--	0.21
100	4.58	--	0.34
150	4.86	--	0.65
200	5.00	0.36	1.09



深圳市杰晟兴电子有限公司 JM Components Limited

地址: 深圳市福田区中航路7号鼎诚国际大厦南座2007室

手机: 13662266995 马少良 电话: 0755-83951311

官网: cn-sensor.com

邮编: 518031

传真: 0755-83952401

电邮: jackson@jmcomponents.com