

## FECS40-1000 Gas Sensor for Carbon Monoxide Detection

### characteristic : \_\_\_\_\_

- \* High sensitivity and selectivity for carbon monoxide
- \* Responds very quickly to carbon monoxide
- \* linear output
- \* long-life
- \* baseline stability
- \* Unique leak-proof structure

FECS40-1000 is a very unique electrochemical carbon monoxide sensor. Its most significant feature is its unique leak-proof construction, which makes it the ideal choice for carbon monoxide monitors and detectors in various fields.

### apply : \_\_\_\_\_

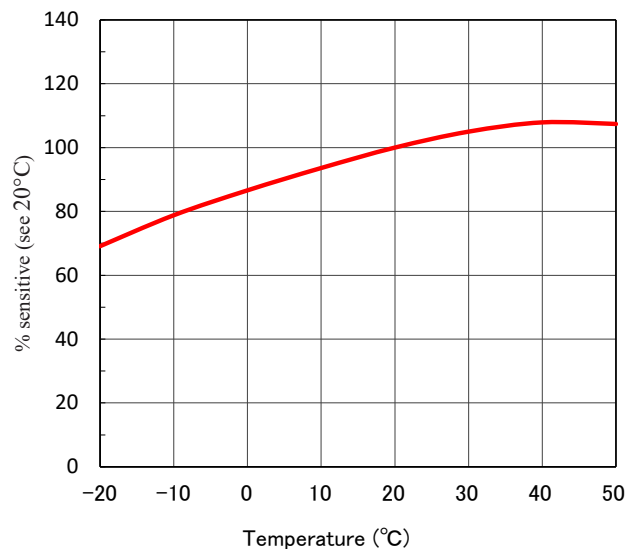
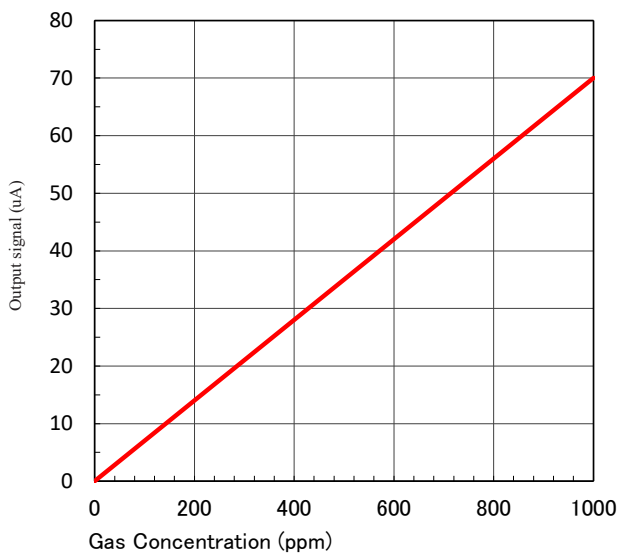
- Portable and fixed carbon monoxide monitors
- :: Carbon monoxide detectors
- :: Ventilation control in indoor parking



### Sensitivity characteristics:      Temperature dependent characteristics:

The typical characteristics (linear output) of FECS40-1000 (20°C) are shown below.

The typical characteristics (temperature dependent) of FECS40-1000 are shown in the figure below.



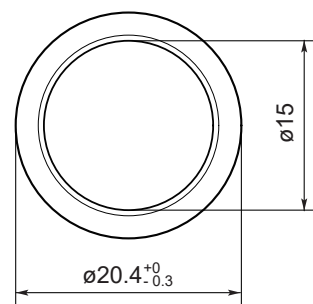
## specifications :

## Structure and size:

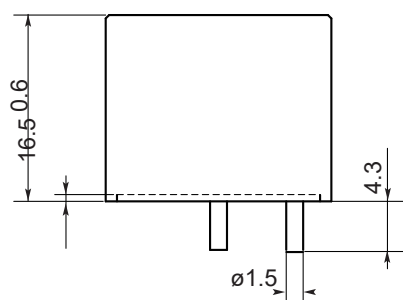
Object gas	carbon monoxide
Scope of detection	0 ~ 1000 ppm
Extreme overload	1500 ppm
output signal	70 ± 15 nA/ppm (*)
repeitiveness	±2% (*)
resolution ratio	1 ppm (*)
Typical baseline range (pure air)	-2 ppm ~ +3 ppm(*)
Typical response time (t90)	<30 seconds (*)
Baseline conversion (-20 to 50°C)	< 10 ppm(*)
Long-term output drift	<5% / year (*)
expected life	3 years (*)
working temperature	-20 ~ 50°C
Humidity at work	15 ~ 90% RH
working pressure range	1013 hPa ± 10%
Recommended load resistance	10 Ω
offset voltage	no requirement
Directional sensitivity	not have
Recommended storage temperature	0 ~ 20°C
Hat color	red
net weight	About 4.5g

(\*) Performance parameters prerequisite: 20. C,50%RH,1013hPa.

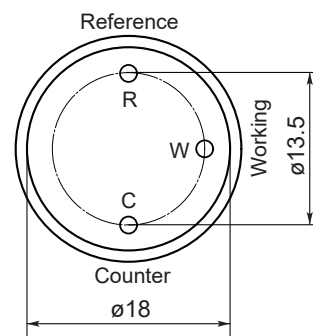
vertical view



lateral view



upward view



Unit : mm

Unless otherwise stated, all work is ±0.1mm

## Cross-sensitive characteristic data:

Table 1 below shows the typical response of FECS40-1000 to various interfering gases.

Table 1 Cross Sensitivity Characteristics of FECS40-1000 (20. C)

gas	potency (ppm)	Typical carbon monoxide equivalent concentration (ppm)
carbon monoxide	100	100
hydrogen	100	< 40
carbon dioxide	5,000	0
sulfur dioxide	30	0
hepatic gas	30	0
nitric oxide	30	< 3
nitrogen dioxide	30	0
ammonia	100	0
ethyl alcohol	200	0

Figaro Technology Research Co., LTD  
 11,1-5-11, Funamachi West, Kaminami City, Osaka  
 Zip code: 562-8505  
 Tel: + 81727282561  
 Fax: 81-72-728-0467  
 Mail: figaro@figaro.co.jp  
 URL: www.figaro.co.jp